



## ECO SERIES LITHIUM BATTERY

 | **CWD-ECO-LFP-12V-60Ah**  | **CWD-ECO-LFP-12V-100Ah**

Designed with the unique combination of Lithium Iron Phosphate batteries and an advanced Battery Management System (BMS), ECO Series LFP Lithium batteries are available in 12.8V options and different capacities.



### High Performance

Great performance based on the latest generation of LiFePO<sub>4</sub> technology



### Active Smart Management System

Effective usage as well as with actively balancing BMS technology



### Long Lifespan

Long lifespan up to 5000 cycles



### Durable Metal Case

Aesthetic, compact and durable metal cabinet design



### Universal Approach

Product options for different applications



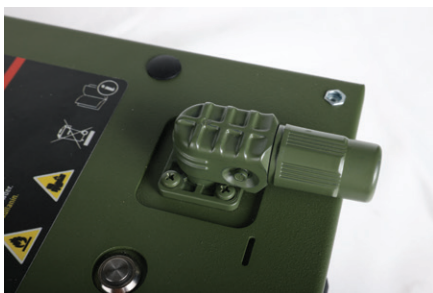
### Temperature Resistant

Temperature sensor and heat resistant casing



### IP65 Protection Class

IP65 compatible metal cabinet and connector components



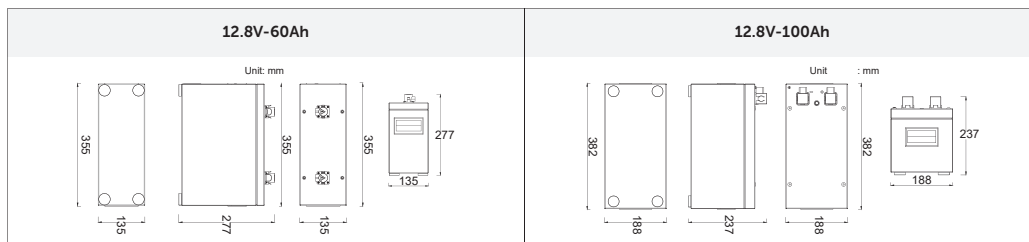
CW DEFENCE ECO Series LiFePO<sub>4</sub> Lithium Batteries with impressive deep discharge values operate at high capacity throughout their lifetime with excellent cycle performance, maximising system efficiency. CW DEFENCE ECO Series LFP Lithium Batteries, which have a durable and IP65 metal case design, are presented as an ecological energy storage solution that provides functionality and flexibility in use thanks to its high current carrying capacity connection terminals.

## ECO SERIES LITHIUM BATTERY

### TECHNICAL SPECIFICATIONS

ELECTRICAL SPECIFICATIONS	ECO-LFP-12V-60Ah		ECO-LFP-12V-100Ah	
Nominal Voltage [V]	12.8		12.8	
Nominal Capacity [Ah]	60		100	
Nominal Energy [Wh]	768		1280	
Recommended Charging Current [A]	20		30	
Maximum Charging Current [A]	30		50	
Recommended Charging Voltage [V]	14.2		14.2	
Maximum Charging Voltage [V]	14.6		14.6	
Recommended Discharge Current [A]	30		50	
Maximum Discharge Current [A]	60		100	
Discharge Cut-off Voltage [V]	11.1±0.2		11.1±0.2	
<b>CYCLE SPECIFICATIONS (at 25°C)</b>				
100% D.O.D			2000 Cycles	
50% D.O.D			3400 Cycles	
30% D.O.D			4800 Cycles	
<b>SAFETY AND STANDARDS</b>				
Overcharge Protection			Yes	
Overdischarge Protection			Yes	
Overcurrent Protection			Yes	
Short Circuit Protection			Yes	
Overtemperature Protection			Yes	
Temperature Sensor			Yes	
Adjustable Charge/Discharge Current			Yes	
Cell Type			LFP 32700 Cylindrical	
Safety Standards			IEC 61960 / 62133-2	
<b>ENVIRONMENTAL CONDITIONS</b>				
Charging Temperature [°C]			0 ~ +60	
Discharge Temperature [°C]			-20 ~ +60	
Storage Temperature [°C]			0 ~ +35	
Humidity (Non-Condensing) [%]			Max. 95%	
Protection Class			IP65	
Design Life [Year]			>10	
Warranty [Year]			5	
<b>ADDITIONAL INFORMATION</b>				
Dimensions (WxDxH) [mm]	135x355x277	188x237x382	340x382x239	340x382x239
Weight [kg]	11	16	29	29
Battery Connector	M8 Connection Terminal			
Serial Connection	No			
Parallel Connection	No			
Casing Material	Metal			

### PHYSICAL CHARACTERISTICS



\* CW DEFENCE reserves the right to change the specifications of the products without prior notice.  
 \* The charge, discharge, capacity, and cycle values stated above are valid at 25 °C and non-condensing environment.  
 \* CW DEFENCE products are project based products. Changes can be made upon your needs.